



**WORLD'S BEST
ALLOY BULLBARS**

East Coast Bullbars (ECB Pty Ltd)

Tel: 07 3897 5700

Fax: 07 3283 1168

ecb@ecb.com.au www.ecb.com.au

29 Snook St
Clontarf QLD 4019
Australia

Po Box 122
Margate QLD 4019
Australia

BT91S

REPLACES: 27.07.04

REVISED: 22.08.10

FITTING INSTRUCTIONS

TOYOTA LANDCRUISER 70/75/78/79 SERIES BIG TUBE™ WITH 9000LB WARN WINCH MOUNTING BRACKET PROTECTION BAR VEHICLE FRONTAL PROTECTION SYSTEM (VFPS)

Check installation hardware before commencing.

1. Remove bumper bar from vehicle. Two 14mm head bolts (each side).
2. Attach ECB steel mounting brackets (supplied) to outside of vehicle chassis. Use ½ x 5½ bolts/nuts (supplied) vertically through chassis. Use M10 x 30 x 1.25 bolts (supplied) in chassis sides. **FINGER TIGHTEN ONLY. See figures 1 and 2.**
3. Lift bonnet and locate original indicator / park light wiring in vehicle and splice ECB indicator / park light wiring (supplied – connected to indicator / park lights with plug) into original indicator / park wiring. Use cable locks (supplied).
4. Fit ECB LED indicator / park lights into protection bar as per instructions supplied with the LED indicator kit. **NOTE: Ensure park light is to outside. See figure 3.**
5. Place protection bar face down on workhorses.
6. Attach control box alloy mount (supplied) to top of protection bar. **See figure 4.** Use M8 x 25 bolt, nuts and washers (supplied). **TIGHTEN SQUARE** in position. **NOTE: Feed bolts from inside, nuts to top.**
7. Place ECB winch mounting bracket (supplied) in rear of protection bar. Align with cut out and holes. **See figure 5.**
8. Rotate clutch lever assembly on winch forward (if required). Remove ten M5 allen head bolts. Do not remove assembly. Move out just enough for assembly to turn two holes forward. **See figure 6.** Replace allen head bolts. **TIGHTEN.**
9. Place winch in winch mounting bracket. Feed cable through cut out as installing. Insert 3/8 x 1 ½ bolts and washers (supplied with winch) into top holes in front of protection bar and into winch. **FINGER TIGHTEN ONLY. See figure 7.**
10. Remove hook from winch cable. Slide roller fairlead over winch cable and attach to lower holes using 3/8 x 2 bolts and washers (supplied). **FINGER TIGHTEN ONLY.**
11. Attach control box to control box bracket on top of protection bar. Use original nuts with extra flat washers (supplied). **See figure 8. NOTE: ¼ flat washer each side of control box bracket (for each side).** Connect control box cable to winch as marked.
12. Attach protection bar to inside of steel mounting brackets on vehicle. Use ½ x 2 bolts, nuts and washers (supplied). **NOTE: Feed bolts from outside with flat washer and spring washer on bolt.**
13. Align protection bar with vehicle. **NOTE side view. See figure 9.**



**WORLD'S BEST
ALLOY BULLBARS**

East Coast Bullbars (ECB Pty Ltd)

Tel: 07 3897 5700

Fax: 07 3283 1168

ecb@ecb.com.au www.ecb.com.au

29 Snook St
Clontarf QLD 4019
Australia

Po Box 122
Margate QLD 4019
Australia

14. **TIGHTEN ALL BOLTS.** Including winch and roller fairlead bolts.
15. Route winch cables to battery and connect.
16. Connect indicator / park light wiring to indicator / park lights. **CHECK FOR CORRECT OPERATION.**
17. Ensure all wiring is fitted in a tradesman like manner and will not rub on any sharp surfaces.

ENSURE NUMBER PLATE IS CLEARLY VISABLE

Note: When fitting/refitting the licence plate to the vehicle, ensure there is no obstruction to licence plate vision in accordance with local authorities. If required relocate licence plate to an alternate location.

Further VFPS Notes:

- a) Do not attach VFPS to the vehicle using anchorages not intended for this purpose (e.g. engine mounting bolts).
- b) Do not use this product for any vehicle make or model, other than those specified by the VFPS manufacturer.
- c) Do not remove the plaque or label from the VFPS.
- d) Do not modify the structure of the VFPS in any way.
- e) No accessory or fitment should project forward of the VFPS forward profile.
- f) **ENSURE THESE INSTRUCTIONS ARE LEFT WITH VEHICLE OWNER AND/OR OPERATOR.**

FITTING KIT

2 – Steel mounting brackets.	2 – 3/8 x 2 bolts (to replace original 1½ winch bolts).
1 – Steel winch mounting bracket	4 – 3/8 flat washers.
1 – Alloy control box mount.	4 – ¼ flat washers.
4 – M10 x 30 x 1.25 bolts.	2 – M8 x 25 bolts and nuts.
4 – 10mm flat washers.	2 – M8 flat washers.
4 – 10mm spring washers.	2 – M8 spring washers.
2 – ½ x 5 ½ bolts/nuts.	1 – ECB LED Indicator / Park light kit.
6 – ½ x 2 bolts/nuts.	6 – Cable locks
16 – ½ flat washers.	
8 – ½ spring washers.	



**WORLD'S BEST
ALLOY BULLBARS**

East Coast Bullbars (ECB Pty Ltd)

Tel: 07 3897 5700

Fax: 07 3283 1168

ecb@ecb.com.au www.ecb.com.au

29 Snook St
Clontarf QLD 4019
Australia

Po Box 122
Margate QLD 4019
Australia

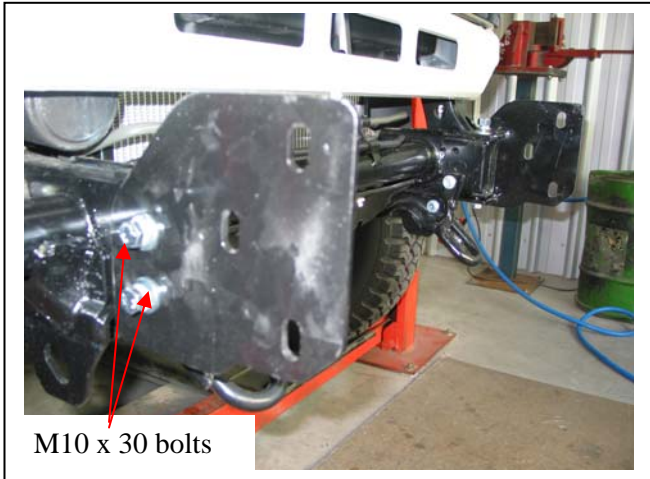


Figure 1 – Drivers side shown

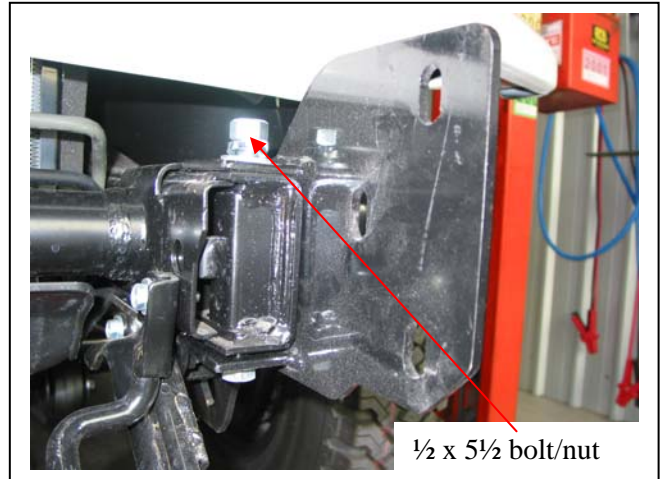


Figure 2 – Passenger side shown

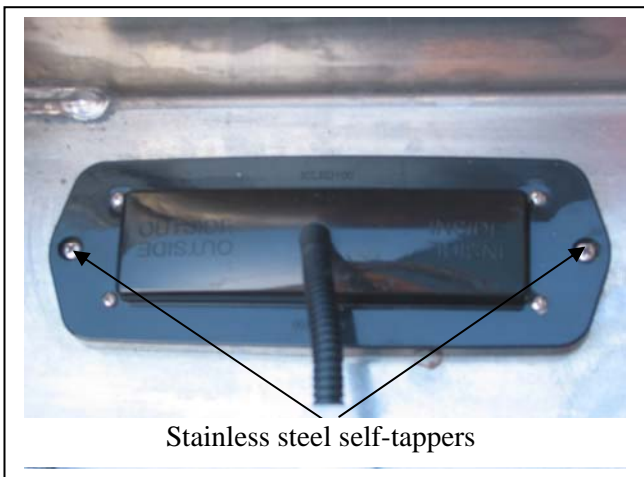


Figure 3

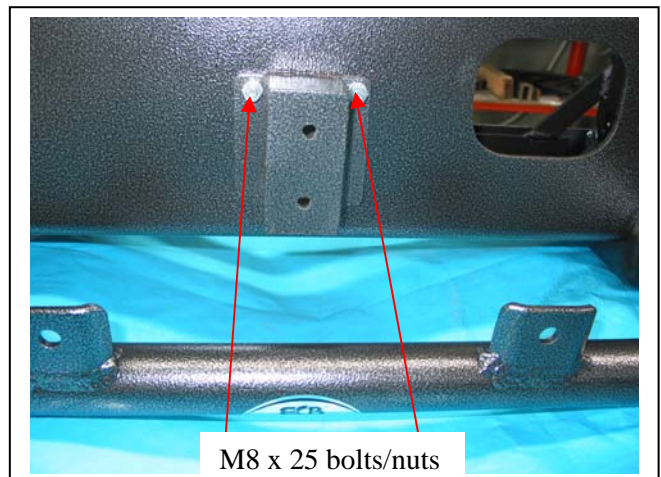


Figure 4



**Winch mounting
bracket**

Figure 5



Figure 6
Clutch lever rotated to protrude through protection bar



**WORLD'S BEST
ALLOY BULLBARS**

East Coast Bullbars (ECB Pty Ltd)

Tel: 07 3897 5700

Fax: 07 3283 1168

ecb@ecb.com.au www.ecb.com.au

29 Snook St
Clontarf QLD 4019
Australia

Po Box 122
Margate QLD 4019
Australia



Figure 7



Figure 8



Figure 9



**WORLD'S BEST
ALLOY BULLBARS**

East Coast Bullbars (ECB Pty Ltd)

Tel: 07 3897 5700

Fax: 07 3283 1168

ecb@ecb.com.au www.ecb.com.au

29 Snook St
Clontarf QLD 4019
Australia

Po Box 122
Margate QLD 4019
Australia

We value your comments

Dear Fitter,

ECB would like to know how you went with the installation of this product. We value your comment and may need to contact you to clarify some details so please complete your contact details clearly.

We would appreciate if you could complete as many of the following details as possible.

Your Name:	Your contact No.
Product Part No.	Product Invoice No.
Product Description:	Make, model, and year of vehicle:
Product Work Order No.	Company your from/Company product purchased from:

Date of Fitment: ____/____/____

Was the fitting hardware supplied complete?

Yes

No

If no what was not supplied

Did the installation go well?

Yes

No

Please provide comments

Please draw diagrams if you need to.

Post to
Reply Paid 122
PO Box 122
Margate QLD 4019

Fax to
(07) 3283 1168



**WORLD'S BEST
ALLOY BULLBARS**

East Coast Bullbars (ECB Pty Ltd)

Tel: 07 3897 5700

Fax: 07 3283 1168

ecb@ecb.com.au www.ecb.com.au

29 Snook St
Clontarf QLD 4019
Australia

Po Box 122
Margate QLD 4019
Australia



WORLD'S BEST
ALLOY BULLBARS

East Coast Bullbars (ECB Pty Ltd)

Tel: 07 3897 5700

Fax: 07 3283 1168

ecb@ecb.com.au www.ecb.com.au

29 Snook St
Clontarf QLD 4019
Australia

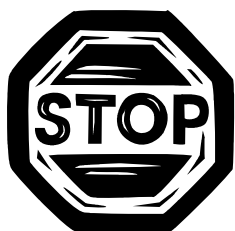
Po Box 122
Margate QLD 4019
Australia

DESPATCH CHECKLIST BT91S

Work Order #	
Finish:	
Transport:	
Due Date:	

- 2 – Steel mounting brackets.
- 1 – Steel winch mounting bracket.
- 1 – Alloy control box mount.
- 1 – Bolt kit.
- 1 – LED ECB indicator / park light kit.
- 2 – ECB Over riders – **Fitted to Bar.**

**See other side of
this page for
photos of all
mounts**



Is this product “the best it can be” Yes _____/_____

Wrapper's initials / Checker initials

If NO fix before continuing

All parts checked and completed by:

Nut and bolts: _____ Date __/__/__

Order control: _____ Date __/__/__

Final wrap check: _____ Date __/__/__



**WORLD'S BEST
ALLOY BULLBARS**

East Coast Bullbars (ECB Pty Ltd)

Tel: 07 3897 5700

Fax: 07 3283 1168

ecb@ecb.com.au www.ecb.com.au

29 Snook St
Clontarf QLD 4019
Australia

Po Box 122
Margate QLD 4019
Australia

